

**Department: CARDIOLOGY**

**Reporting Period: Apr 2014**

Charges (Rolling 6m)	January	February	March	April	November	December	6 Month Total
Current	\$578,703	\$446,768	\$677,274	\$562,568	\$560,683	\$541,988	\$3,367,984
Previous	\$615,725	\$528,742	\$553,227	\$743,418	\$571,578	\$541,839	\$3,554,529
Variance	-6.0%	-15.5%	22.4%	-24.3%	-1.9%	0.0%	-5.2%

Charges by Ins. Class	January	February	March	April	November	December	6 Month Total
Medicare	\$190,402	\$123,366	\$206,864	\$167,056	\$170,749	\$169,346	\$1,027,783
Medicare Advantage	\$168,259	\$133,387	\$184,169	\$195,617	\$166,683	\$152,851	\$1,000,966
Bcbs- Highmark	\$114,942	\$84,074	\$121,690	\$97,511	\$114,278	\$106,813	\$639,308
Commercial	\$49,089	\$37,638	\$73,857	\$41,703	\$33,846	\$29,936	\$266,069
Bcbs-Other	\$22,313	\$23,985	\$29,779	\$21,468	\$23,206	\$37,979	\$158,730
Geisinger	\$13,285	\$18,905	\$30,110	\$21,628	\$19,381	\$15,209	\$118,518
Medicaid	\$17,214	\$17,874	\$12,975	\$9,475	\$19,573	\$12,601	\$89,712
Self-Pay	\$3,067	\$7,026	\$16,811	\$7,714	\$12,615	\$16,791	\$64,024
Workers Compensation	\$132	\$513	\$1,019	\$352	\$352	\$440	\$2,808
Collections				\$44			\$44
Occupational Medicine						\$22	\$22

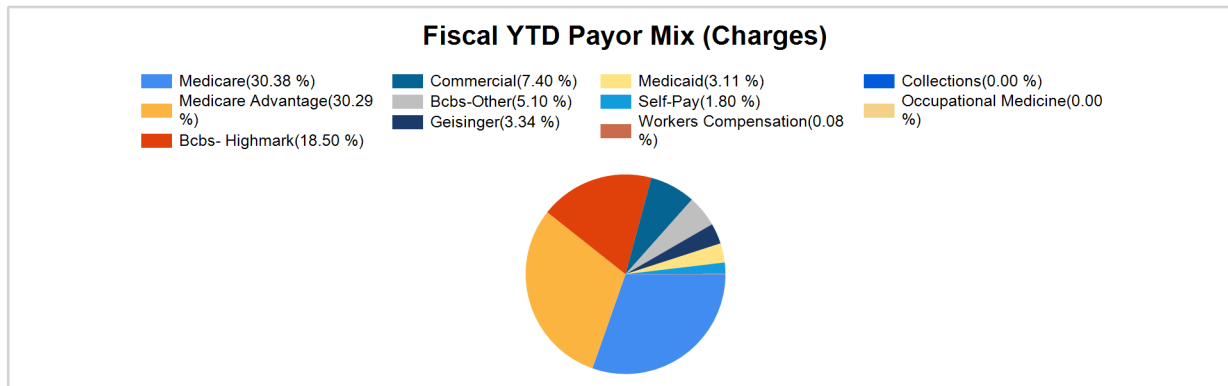
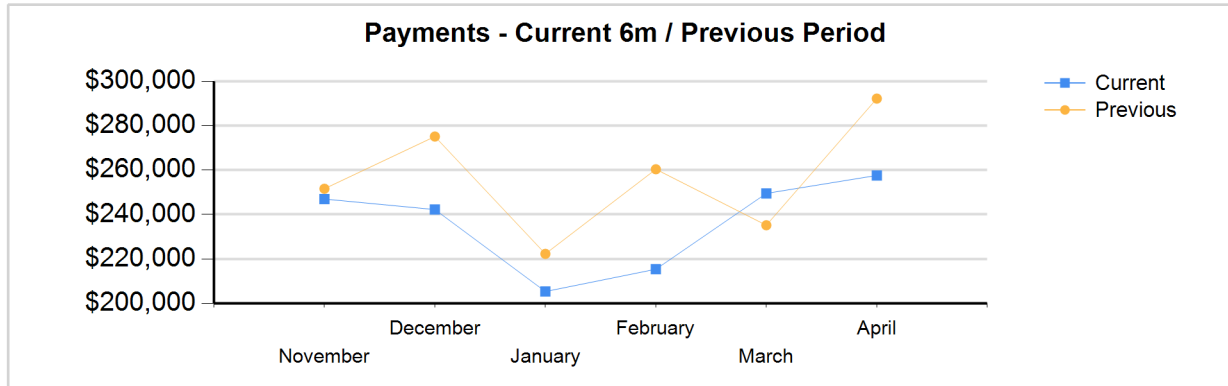
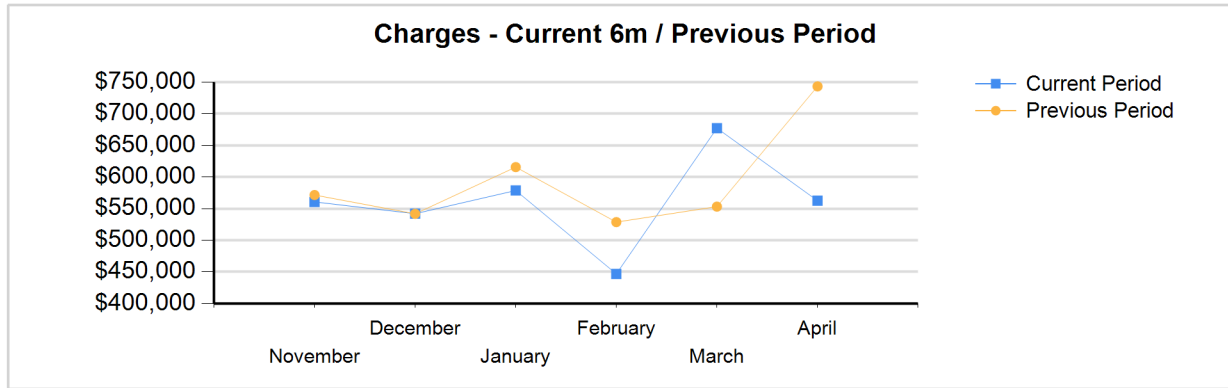
Pay / Adj (Rolling 6m)	January	February	March	April	November	December	6 Month Total
Payments							
Current	\$205,285	\$215,334	\$249,518	\$257,627	\$246,972	\$242,237	\$1,416,972
Previous	\$222,268	\$260,399	\$235,172	\$292,263	\$251,627	\$275,152	\$1,536,880
Variance	-7.6%	-17.3%	6.1%	-11.9%	-1.8%	-12.0%	-7.8%
Adjustments							
Current	\$282,852	\$300,243	\$338,968	\$322,321	\$338,167	\$345,049	\$1,927,599
Previous	\$365,497	\$384,300	\$299,340	\$409,350	\$392,824	\$498,570	\$2,349,881
Variance	-22.6%	-21.9%	13.2%	-21.3%	-13.9%	-30.8%	-18.0%

Payments by Ins. Class	January	February	March	April	November	December	6 Month Total
Medicare Advantage	\$53,140	\$56,547	\$59,899	\$66,720	\$64,753	\$62,903	\$363,963
Medicare	\$47,284	\$38,262	\$47,161	\$55,128	\$61,087	\$49,541	\$298,463
Bcbs- Highmark	\$42,196	\$46,795	\$45,843	\$48,768	\$51,272	\$55,736	\$290,610
Commercial	\$18,922	\$31,137	\$27,408	\$35,176	\$22,819	\$21,801	\$157,262
Self-Pay	\$24,678	\$22,936	\$33,651	\$31,712	\$22,524	\$19,776	\$155,277
Bcbs-Other	\$8,343	\$8,023	\$13,804	\$8,461	\$9,375	\$15,592	\$63,599
Medicaid	\$7,141	\$7,465	\$8,421	\$4,697	\$7,963	\$8,890	\$44,578
Geisinger	\$3,178	\$4,081	\$13,091	\$6,465	\$6,967	\$7,370	\$41,153
Workers Compensation	\$401	\$88	\$227	\$498	\$212	\$628	\$2,055
Collections	\$0	\$0	\$12	\$0	\$0	\$0	\$12
Occupational Medicine	\$0						\$0

**Current FY vs. Previous FY**

Charges	FY 14	FY 13	Var. %
Total	\$5,716,884	\$6,122,707	-6.6%
BCBSHMRK	\$1,060,819	\$1,158,336	-8.4%
BCBSOTH	\$294,695	\$323,693	-9.0%
COLLECT	\$66	\$92	-28.3%
COMM	\$424,650	\$385,543	10.1%
GEISINGE	\$192,685	\$235,554	-18.2%
MCADVANT	\$1,744,646	\$1,756,184	-0.7%
MCPA	\$1,728,618	\$1,905,850	-9.3%
MDPA	\$162,789	\$209,287	-22.2%
OCCMED	\$22		Infinity
Self-Pay	\$103,352	\$139,517	-25.9%
SPPF		\$44	-100.0%
WCOM	\$4,541	\$8,607	-47.2%

Payments	FY 14	FY 13	Var. %
Total	\$2,426,244	\$2,654,787	-8.6%
BCBSHMRK	\$484,734	\$558,343	-13.2%
BCBSOTH	\$116,532	\$152,067	-23.4%
COLLECT	\$23	\$5,352	-99.6%
COMM	\$249,652	\$277,395	-10.0%
GEISINGE	\$64,316	\$69,183	-7.0%
MCADVANT	\$641,741	\$645,896	-0.6%
MCPA	\$515,896	\$603,931	-14.6%
MDPA	\$85,185	\$64,075	32.9%
OCCMED	\$0		NaN
Self-Pay	\$264,111	\$272,408	-3.0%
SPPF		\$0	NaN
WCOM	\$4,053	\$6,137	-34.0%
Adjustments	\$3,284,600	\$3,972,499	-17.3%



**Department: CARDIOLOGY**

**Reporting Period: Apr 2014**

**Billed Services by Procedure Code**

Procedure by Dollar Volume	Apr 2014	FY 14	FY 13	Var %	Procedure by Unit Volume	Apr 2014	FY 14	FY 13	Var %
99214 - Office/Outpatient Visit, Est, Lvl 4	\$100,672	\$975,920	\$956,736	2.0%	93010 - Electrocardiogram Report	2,221	20,807	27,056	-23.1%
93010 - Electrocardiogram Report	\$48,642	\$457,050	\$595,518	-23.3%	99214 - Office/Outpatient Visit, Est, Lvl 4	573	5,556	5,441	2.1%
93458 - Cath Placement Coronary Artery W/Left	\$41,024	\$381,726	\$351,268	8.7%	99213 - Office/Outpatient Visit, Est, Lvl 3	211	1,414	1,582	-10.6%
93306 - Echocardiography, Transthoracic	\$39,258	\$423,006	\$419,883	0.7%	36416 - Collection Of Capillary Blood Specimen	201	2,072	2,022	2.5%
99213 - Office/Outpatient Visit, Est, Lvl 3	\$25,109	\$167,790	\$188,258	-10.9%	99233 - Subsequent Hosp Care, Lvl 3	92	834	1,078	-22.6%
93351 - Stress Echo Includes Treadmill	\$18,591	\$201,480	\$216,893	-7.1%	99232 - Subsequent Hosp Care, Lvl 2	79	660	910	-27.5%
99223 - Initial Hospital Care, Lvl 3	\$16,850	\$111,547	\$109,525	1.8%	TRACKING - Encounter Tracking Service Already Enter	67	938	762	23.1%
99233 - Subsequent Hosp Care, Lvl 3	\$15,570	\$143,417	\$186,148	-23.0%	99223 - Initial Hospital Care, Lvl 3	51	334	328	1.8%
93454 - Catheter Placement Coronary Artery	\$14,868	\$165,672	\$133,812	23.8%	99215 - Office/Outpatient Visit, Est, Lvl 5	51	513	375	36.8%
99215 - Office/Outpatient Visit, Est, Lvl 5	\$11,850	\$120,633	\$87,767	37.4%	G0250 - Physician Review	47	378	337	12.2%

**Billed Services by Diagnosis Code**

Diagnosis by Dollar Volume	Apr 2014	FY 14	FY 13	Var %	Diagnosis by Unit Volume	Apr 2014	FY 14	FY 13	Var %
414.00 - Athrscrl, Coronary, Vessel Type Nos	\$35,785	\$330,447	\$353,177	-6.4%	794.31 - Abrslt, Fnctn Study, Ekg	726	5,522	4,715	17.1%
427.31 - Fibrillation, Atrial	\$33,144	\$336,899	\$392,286	-14.1%	427.31 - Fibrillation, Atrial	372	3,684	5,340	-31.0%
794.31 - Abrslt, Fnctn Study, Ekg	\$17,432	\$146,456	\$130,088	12.6%	786.50 - Symptom, Pain, Chest Nos	333	3,176	3,280	-3.2%
425.4 - Cardiomyopathy, Primary Nec	\$14,285	\$109,801	\$135,583	-19.0%	V72.81 - Preoperative Cardiovascular Exam	328	3,853	5,140	-25.0%
401.9 - Hypertension, Essential Nos	\$13,419	\$117,055	\$146,589	-20.1%	414.00 - Athrscrl, Coronary, Vessel Type Nos	207	1,922	2,208	-13.0%
424.1 - Disorder, Aortic Valve	\$13,233	\$100,310	\$91,924	9.1%	786.05 - Symptom, Shortness Of Breath	172	1,521	1,028	48.0%
786.50 - Symptom, Pain, Chest Nos	\$13,225	\$141,518	\$149,556	-5.4%	401.9 - Hypertension, Essential Nos	110	1,198	1,822	-34.2%
V72.81 - Preoperative Cardiovascular Exam	\$9,160	\$129,183	\$151,846	-14.9%	V58.61 - Afrtrcr, Long-Term Use, Anticoag	104	1,009	522	93.3%
413.9 - Angina Pectoris Nec/Nos	\$9,108	\$67,096	\$40,128	67.2%	780.2 - Symptom, Syncope And Collapse	88	779	978	-20.3%
V45.02 - Aicd In Situ	\$7,990	\$52,481	\$38,042	38.0%	425.4 - Cardiomyopathy, Primary Nec	84	603	640	-5.8%

**Department: CARDIOLOGY**

**Reporting Period: Apr 2014**

**Aged Accounts Recievable**

Reporting Period	Days	( Pending )	( 0 - 30 )	( 31 - 60 )	( 61 - 90 )	( 91 - 120 )	( 121 - 180 )	( 181 - 365 )	( Over 365 )	Total AR	AR w/o BDC
Nov 2013	25.8	\$35,009	\$411,166	\$33,463	\$6,316	\$12,002	\$8,478	\$103	\$1,759	\$508,296	\$508,296
		6.9%	80.9%	6.6%	1.2%	2.4%	1.7%	0.0%	0.3%		
Insurance	Days	( Pending )	( 0 - 30 )	( 31 - 60 )	( 61 - 90 )	( 91 - 120 )	( 121 - 180 )	( 181 - 365 )	( Over 365 )	Total AR	

**Department: CARDIOLOGY**

**Reporting Period: Apr 2014**

**Net Collection Percentage**

November	December	January	February	March	April	FY 14	FY 13
88.5%	89.9%	89.0%	87.9%	74.6%	18.9%	68.1%	91.8%

**Work RVU's - Rolling 6 month**

	January	February	March	April	November	December	FY Period	WRVU's
Current	0.00	0.00	0.00	0.00	3,219.65	2,373.38	FY 14	19,989.14
Previous	3,680.52	3,135.07	3,224.13	4,349.06	3,291.61	3,246.85	FY 13	36,278.65
<b>Variance</b>	<b>-100.0%</b>	<b>-100.0%</b>	<b>-100.0%</b>	<b>-100.0%</b>	<b>-2.2%</b>	<b>-26.9%</b>	<b>FY Variance</b>	<b>-44.9%</b>

**Current FY vs Previous FY**

**Visit Status**

	March	April	May	June	July	August	FY 14	FY 13
Acknowledged	1,399	1,470	138	0	0	0	10935	19038
Bumped	0	0	20	8	0	0	28	0
Confirmed	0	0	0	0	0	1	1	0
Med Rec Request	0	0	0	0	0	0	0	0
No Show	61	48	6	0	0	0	488	847
Scheduled	3	9	886	585	508	337	2330	9
Wait List	0	0	3	3	0	0	6	0
Cancelled	678	741	365	185	144	77	6319	10175

**Open Encounters**

	Open
<b>Total</b>	

**Co-Pays Collected at TOS**

6 Months	Amout Due	Collected	% Coll
January	\$6,410	\$5,377	83.9%
February	\$5,219	\$4,156	79.6%
March	\$7,312	\$5,820	79.6%
April	\$8,449	\$5,703	67.5%
November	\$6,480	\$5,090	78.5%
December	\$5,260	\$4,152	78.9%
FY Period	Amt Due	Collected	% Coll
FY 14	\$64,268	\$51,359	79.9%
FY 13	\$63,918	\$51,917	81.2%

**Department: CARDIOLOGY**

**Reporting Period: Apr 2014**

**Billed Service Levels**

Month	Visits	Total	New/Est	Lvl 1	L-1 %	Lvl 2	L-2 %	Lvl 3	L-3 %	Lvl 4	L-4 %	Lvl 5	L-5 %
January	Total	887		23		4		172		598		90	
	New	68	7.7%	0	-	0	-	10	14.7%	33	48.5%	25	36.8%
	Established	819	92.3%	23	2.8%	4	0.5%	162	19.8%	565	69.0%	65	7.9%
February	Total	702		26		5		93		509		69	
	New	50	7.1%	0	-	0	-	7	14.0%	36	72.0%	7	14.0%
	Established	652	92.9%	26	4.0%	5	0.8%	86	13.2%	473	72.5%	62	9.5%
March	Total	875		19		7		152		621		76	
	New	59	6.7%	0	-	0	-	5	8.5%	39	66.1%	15	25.4%
	Established	816	93.3%	19	2.3%	7	0.9%	147	18.0%	582	71.3%	61	7.5%
April	Total	910		18		2		217		607		66	
	New	55	6.0%	0	-	0	-	6	10.9%	34	61.8%	15	27.3%
	Established	855	94.0%	18	2.1%	2	0.2%	211	24.7%	573	67.0%	51	6.0%
November	Total	739		16		5		124		551		43	
	New	53	7.2%	0	-	0	-	10	18.9%	31	58.5%	12	22.6%
	Established	686	92.8%	16	2.3%	5	0.7%	114	16.6%	520	75.8%	31	4.5%
December	Total	698		20		2		120		510		46	
	New	35	5.0%	0	-	0	-	12	34.3%	17	48.6%	6	17.1%
	Established	663	95.0%	20	3.0%	2	0.3%	108	16.3%	493	74.4%	40	6.0%
FY 14	Total	8308		211		48		1503		5912		634	
	New	567	6.8%	0	-	1	-	89	15.9%	356	71.0%	121	13.0%
	Established	7741	93.2%	211	3.1%	47	0.6%	1414	21.2%	5556	69.4%	513	5.7%
FY 13	Total	8245		237		82		1659		5822		445	
	New	529	6.4%	0	-	1	-	77	26.7%	381	66.7%	70	6.7%
	Established	7716	93.6%	237	4.5%	81	0.4%	1582	16.0%	5441	72.4%	375	6.7%

**Visit Volume**

Month	Total	Percent	Out Patient Visits					In Patient Visits			
	Visits	New	Total	New	Return	Consult	Post Op	Total	Consult	Subs	NHome
January	1134	6.0%	956	68	819	60	9	178	61	117	0
February	929	5.4%	733	50	652	29	2	196	65	131	0
March	1164	5.1%	933	59	816	54	4	231	70	161	0
April	1226	4.5%	961	55	855	47	4	265	85	180	0
November	1031	5.1%	795	53	686	49	7	236	79	157	0
December	929	3.8%	739	35	663	36	5	190	63	127	0
FY 14	11107	4.5%	8827	567	7741	454	65	2280	734	1546	0
FY 13	11813	3.4%	8827	529	7716	514	68	2986	911	2075	0
Variance	-6.0%		0.0%	7.2%	0.3%	-11.7%	-4.4%	-23.6%	-19.4%	-25.5%	NaN

**Department: CARDIOLOGY**

**Reporting Period: Apr 2014**

**Charge Lag**

Place of Service	January	February	March	April	November	December
<b>In-Patient</b>	<b>13</b>	<b>16</b>	<b>20</b>	<b>32</b>	<b>19</b>	<b>16</b>
Medical Center - Ip	13	16	20	30	17	15
Medical Center - Spu	-	-	-	29	-	-
Medical Center - Surg Center	-	-	-	36	21	16
<b>Out-Patient</b>	<b>8</b>	<b>9</b>	<b>11</b>	<b>35</b>	<b>11</b>	<b>8</b>
Lewistown	8	5	4	47	2	1
Lewistown Im	-	-	4	5	-	-
Med Treatment Unit	-	-	-	30	19	-
Medical Center - Er	12	17	21	31	18	16
Medical Center Op	13	16	20	28	17	17
Area Family Medicine	3	4	13	87	4	3
Ste 201 Park Ave Office	6	5	6	15	4	5

**Current FY vs Previous FY**

Place of Service	FY 14	FY 13
<b>In-Patient</b>	<b>18</b>	<b>36</b>
Haven Hospital Inpatient	-	104
Medical Center - Ip	16	30
Medical Center - Spu	29	45
Medical Center - Surg Center	20	20
<b>Out-Patient</b>	<b>13</b>	<b>27</b>
Brookline Home Care, Inc	-	4
Internal Medicine Ste 302	98	335
Lewistown	9	8
Lewistown Im	5	-
Med Treatment Unit	16	34
Medical Center - Er	16	36
Medical Center Op	16	33
Obstetrics & Gynecology	-	25
Area Family Medicine	13	12
Ste 201 Park Ave Office	6	10

**Department: CARDIOLOGY**

**Reporting Period: Apr 2014**

**Controllable Loss Write Off's**

	January	February	March	April	November	December
Appeal Deadline Expired	-	\$215 (3)	-	-	\$122 (1)	\$2,124 (1)
Charge Entry Error	\$1,032 (5)	-	-	-	\$354 (2)	\$64 (1)
Charges Received At Mhs Beyond Limits	\$420 (8)	\$44 (2)	\$22 (1)	\$2,586 (2)	-	-
Duplicate Charge Adjustment	\$265 (4)	-	-	\$24 (2)	\$276 (8)	\$162 (7)
Denied Invalid / Non-Covered Diagnosis	\$20 (1)	-	-	-	-	-
Allowed Frequency Of Procedure Not Met	\$238 (2)	\$304 (3)	\$696 (9)	\$364 (4)	\$542 (4)	\$86 (1)
Maximum Benefits Exceeded	-	\$4,050 (6)	-	-	-	-
No Authorization On File	\$1,511 (2)	\$3,032 (1)	\$600 (1)	\$487 (5)	\$4,564 (6)	\$1,224 (3)
No Clia Number For This Dos	-	-	-	\$28 (2)	-	-
Non Participating / Contracted Provider	\$39 (2)	\$84 (4)	-	\$22 (1)	\$35 (4)	\$52 (3)
Non-Covered Svs- Patient Not Responsible	\$362 (7)	\$457 (4)	\$31 (2)	\$20 (2)	\$150 (9)	\$500 (2)
Procedure Code Dx Conflict	\$451 (5)	\$22 (1)	-	-	\$378 (4)	-
Provider Not Contracted	-	\$17 (1)	-	-	-	-
Past Timely Filing Limit	\$28 (2)	\$22 (1)	-	-	\$1,083 (5)	-
Provider Not Credentialed For This Svs	-	-	-	-	\$68 (3)	-
Wrong Insurance Sent To Mhs	\$65 (3)	\$44 (2)	\$1,015 (8)	\$46 (3)	\$233 (4)	\$44 (2)

**Current FY vs Previous FY**

	FY 14	FY 13
Appeal Deadline Expired	\$2,461 (5)	\$14,890 (42)
Charge Entry Error	\$3,439 (20)	\$4,184 (47)
Charges Received At Mhs Beyond Limits	\$3,991 (17)	\$12,276 (161)
Demographic Information Incorrect	-	\$22 (1)
Duplicate Charge Adjustment	\$2,736 (64)	\$20,222 (233)
Denied Invalid / Non-Covered Diagnosis	\$20 (1)	-
Allowed Frequency Of Procedure Not Met	\$5,816 (51)	\$5,748 (52)
Ma Pharmacy Not Billed Timely	-	\$541 (4)
Maximum Benefits Exceeded	\$4,050 (6)	\$4,994 (47)
No Authorization On File	\$14,716 (26)	\$51,145 (195)
No Clia Number For This Dos	\$28 (2)	\$605 (2)
No Referral On File	-	\$2,101 (11)
No Assist Allowed Per Payer	-	\$52 (4)
Non Participating / Contracted Provider	\$638 (29)	\$1,481 (57)
Non-Covered Svs- Patient Not Responsible	\$3,239 (50)	\$24,357 (160)
No Waiver / Abn On File	-	\$464 (2)
Procedure Code Dx Conflict	\$2,953 (28)	\$5,643 (38)
Provider Not Contracted	\$35 (2)	\$51 (3)
Patient Not Elig At Time Of Service	-	\$17 (1)
Past Timely Filing Limit	\$796 (9)	\$24,185 (188)
Provider Not Credentialed For This Svs	\$639 (36)	\$71 (5)
Wrong Insurance Sent To Mhs	\$3,820 (86)	\$14,819 (317)



**Department: CARDIOLOGY**

**Reporting Period: Apr 2014**

**Non-Controllable Loss Write Off's**

	January	February	March	April	November	December
Appeal Denied	\$386 (4)	-	-	-	-	\$135 (1)
Bundled Procedure	-	\$1,096 (1)	-	-	-	\$16 (2)
Cpt / Dx Conflict	\$316 (5)	\$360 (7)	\$1,877 (17)	\$535 (6)	\$1,627 (17)	\$1,393 (12)
Global Adjustment	\$2,364 (14)	\$285 (2)	\$1,070 (5)	\$350 (2)	\$1,245 (9)	\$1,661 (11)
Inclusive To Primary Procedure	\$1,766 (198)	\$5,287 (185)	\$2,198 (166)	\$1,600 (200)	\$4,250 (171)	\$1,630 (160)
Procedure Not On Fee Schedule	\$461 (8)	\$109 (2)	\$172 (2)	\$132 (4)	\$95 (2)	(\$2,151) (5)
Other Provider Paid Same Dos	-	\$84 (1)	-	\$1,056 (5)	\$794 (2)	\$226 (3)
Pa Ineligible To Bill Secondary Insuranc	\$3 (1)	\$106 (2)	\$81 (4)	\$405 (22)	-	-
Place Of Service Conflict	-	-	-	-	\$871 (2)	\$145 (3)
Primary Paid More Than Secondary Allows	\$182 (14)	\$12 (1)	\$74 (6)	\$813 (57)	\$60 (9)	\$96 (8)
Visit / Procedure Same Day	\$141 (2)	\$505 (2)	-	\$230 (1)	-	-

**Current FY vs Previous FY**

	FY 14	FY 13
Appeal Denied	\$1,608 (9)	\$1,226 (10)
Bundled Procedure	\$3,624 (295)	\$33,684 (719)
Cpt / Dx Conflict	\$11,224 (127)	\$38,940 (435)
Global Adjustment	\$975 (4)	\$432 (5)
Global Adjustment	\$12,697 (82)	\$8,545 (51)
Inclusive To Primary Procedure	\$27,099 (1,586)	\$97,721 (1,378)
Procedure Not On Fee Schedule	\$1,118 (71)	\$8,582 (102)
Other Provider Paid Same Dos	\$3,991 (22)	\$22,631 (231)
Pa Ineligible To Bill Secondary Insuranc	\$595 (29)	-
Place Of Service Conflict	\$1,019 (7)	\$4,562 (45)
Primary Paid More Than Secondary Allows	\$1,691 (304)	\$19,984 (919)
Visit / Procedure Same Day	\$1,832 (13)	\$11,349 (91)
Incorrect Capital Legacy	-	\$44 (2)

**Bad Debt Write Off's**

	January	February	March	April	November	December
Bankruptcy	-	-	\$112 (3)	-	-	-
Collections - Balance Submitted To Cmc	\$13,952 (286)	\$2,049 (147)	\$4,911 (160)	\$8,340 (326)	\$4,630 (169)	\$10,889 (553)
No Estate Adjustment	\$126 (12)	\$14 (2)	\$3 (2)	\$400 (5)	-	\$5 (3)

**Current FY vs Previous FY**

	FY 14	FY 13
Bankruptcy	\$112 (3)	\$30 (1)
Collections - Balance Submitted To Cmc	\$72,331 (2,576)	\$178,376 (3,342)
Commercial Bad Debt	(\$45) (1)	-
No Estate Adjustment	\$785 (49)	\$2,015 (89)
Xdo Not Use (Collection Adjustment)	-	\$22 (1)